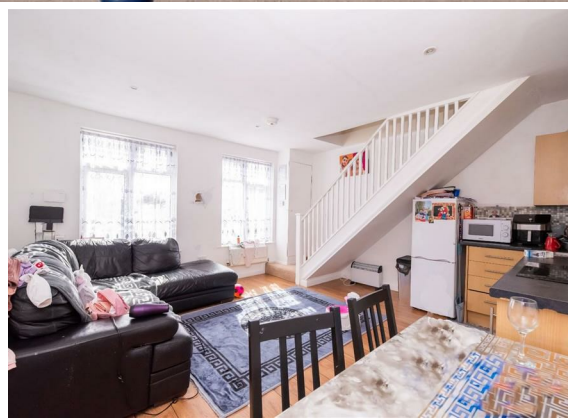




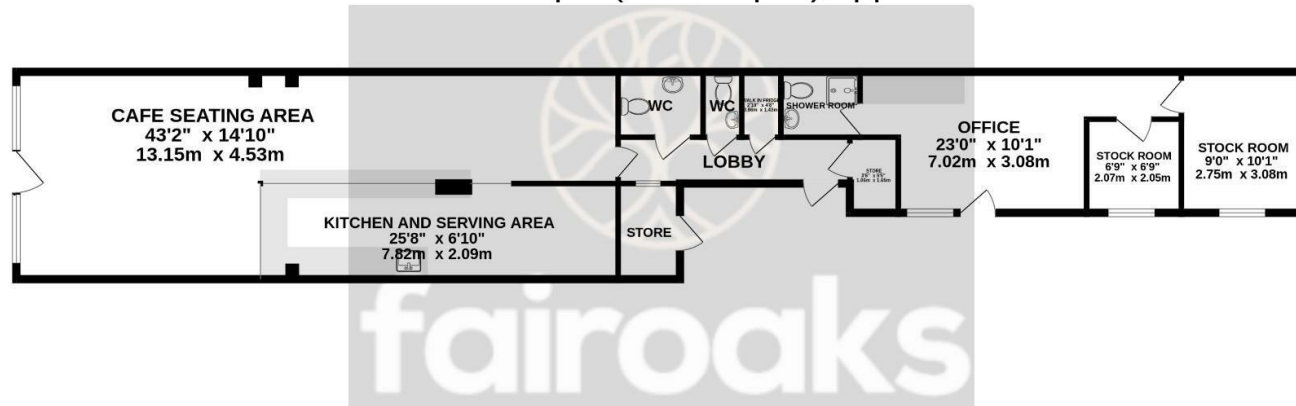
2 Bed
Investment - Let
located in New
Haw

Guide price £595,000



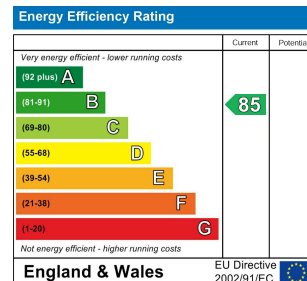
fairoaks

GROUND FLOOR COMMERCIAL LEVEL 1131 sq.ft. (105.1 sq.m.) approx.



TOTAL FLOOR AREA : 1131 sq.ft. (105.1 sq.m.) approx.

Whilst every attempt has been made to ensure the accuracy of the floorplan contained here, measurements of doors, windows, rooms and any other items are approximate and no responsibility is taken for any error, omission or mis-statement. This plan is for illustrative purposes only and should be used as such by any prospective purchaser. The services, systems and appliances shown have not been tested and no guarantee as to their operability or efficiency can be given.
Made with Metropix ©2025



DIRECTIONS

CONTACT

Nicholson House Thames Street
Weybridge
Surrey
KT13 8JG

E: enquiries@fairoaksgroup.co.uk
T: 01932 509 619



fairoaks